

# CATALOGUE

# ROYAL ENFIELD

# ACCESSORIES

---



All prices are recommended retail prices Incl VAT.





---

## BAR END MIRROR KIT, HOMOLOGATED

€208,-

**Article: 1990401**

Color - Black

Compatability - ● Continental GT

Fully homologated replacement mirrors with improved stability. Royal Enfield branded.



---

## TOURING MIRRORS

€208,-

**Article: 1990454**

Color - Black

Compatability - ● **Interceptor**, ● Continental GT

Fully homologated replacement mirrors with improved stability. Royal Enfield branded.



---

## FORK GAITER KIT

€57,-

**Article: 1990405**

Color - Black

Compatability - ● **Interceptor**, ● Continental GT

Give your motorcycle a retro look. Designed specifically for the Interceptor and Continental GT, fork gaiters protect the fork stanchions from stones and debris.





---

## COMPACT ENGINE GUARD

€185,-

**Article: 1990406**

Color - Stainless steel

Compatability - ● **Interceptor**, ● **Continental GT**

Add a layer of protection to key engine areas without compromising on style or ground clearance. The compact engine guard is made from 25mm stainless steel tube. This guard will resist corrosion even if scratched. It has a discrete Royal Enfield branding on the upright. Also available in powder-coated black.



---

## LARGE ENGINE GUARD

€185,-

**Article: 1990407**

Color - Stainless steel

Compatability - ● **Interceptor**, ● **Continental GT**

Get full protection without compromise. The large engine guard is designed for an optimum balance of protection and style. Made with 25mm stainless steel tube, this guard will resist corrosion even if scratched. It comes with discrete Royal Enfield branding on the top bars. Also available in powder-coated black.



---

## COMPACT ENGINE GUARD

€185,-

**Article: 1990408**

Color - Black

Compatability - ● **Interceptor**, ● **Continental GT**

Add a layer of protection to key engine areas without compromising on style or ground clearance. The compact engine guard is made from 25mm mild steel tube with dual coating for corrosion resistance. It has a discrete Royal Enfield branding on the upright. Also available in polished stainless steel.





---

## LARGE ENGINE GUARD

€185,-

**Article: 1990427**

Color - Black

Compatability - ● **Interceptor**, ● **Continental GT**

Get full protection without compromise. The large engine guard is designed for an optimum balance of protection and style. Made with 25mm mild steel tube, it comes with dual coating for corrosion resistance and discrete Royal Enfield branding on the top bars. Also available in polished stainless steel.



---

## SHORT FLYSCREEN KIT

€115,-

**Article: 1990413**

Color - Tinted

Compatability - ● **Interceptor**, ● **Continental GT**

Add to that retro style with the short flyscreen. A dark tinted screen with stainless steel embellisher adds a layer of wind protection when you ride.



---

## TALL FLYSCREEN KIT

€138,-

**Article: 1990414**

Color - Tinted

Compatability - ● **Interceptor**, ● **Continental GT**

Speed through the wind with the tall flyscreen adding a level of wind protection when you ride. It comes with a stainless-steel branded embellisher.



## ALUMINIUM SUMP GUARD

€115,-

**Article: 1990423**

Color - Silver

Compatability - ● **Interceptor**, ● **Continental GT**



Riding on rough terrain? The brushed-aluminium sump guard is a must. It's designed to add a stylish layer of protection to the engine and lower frame rails.

## TOURING SEAT

€289,-

**Article: 1990404**

Color - Black

Compatability - ● **Interceptor**



Increased seat comfort for both rider and passenger from the addition of 3D netting. Rider stand over height is maintained. Royal Enfield branded.

## SINGLE SEAT, RIDER

€185,-

**Article: 1990426**

Color - Black

Compatability - ● **Continental GT**



Make your motorcycle look like a true café-racer. Just like our touring seats, this single seat also comes with 3D net technology. It offers more comfort by distributing weight evenly as you sit across the saddle. Pair it with the Single Seat Cowl of the same colour (available separately) and add on the Solo Rider Finisher Kit (available separately) to bring in-line with the café racer's DNA.



---

## SINGLE SEAT COWL

€115,-

**Article: 1990425**

Color - Black

Compatability - ● Continental GT



Painted Seat Cowl, colour co-ordinated to provide that classic cafe racer image. For fitment to the Seat Rider Only (Part Number 1990426)

---

## SINGLE SEAT COWL

€115,-

**Article: 1990431**

Color - Bleu

Compatability - ● Continental GT



Painted Seat Cowl, colour co-ordinated to provide that classic cafe racer image. For fitment to the Seat Rider Only (Part Number 1990426)

---

## SINGLE SEAT COWL

€115,-

**Article: 1990430**

Color - Blanc

Compatability - ● Continental GT



Painted Seat Cowl, colour co-ordinated to provide that classic cafe racer image. For fitment to the Seat Rider Only (Part Number 1990426)

---

## MACHINED SWINGARM BOBBIN KIT

€57,-

**Article: 1990415**

Color - Black

Compatability - ● **Interceptor**, ● **Continental GT**



Use these machined-aluminium swing-arm bobbins to place your 650 on paddock stands. They help with cleaning and maintenance so you can keep your bike immaculate.

---

## MACHINED BAR END FINISHER KIT

€57,-

**Article: 1990441**

Color - Black

Compatability - ● **Interceptor**, ● **Continental GT**



Subtly style your motorcycle with these handlebar finishers. They are machined from billet aluminium and anodized for a long life.

---

## TOURING SEAT

€289,-

**Article: 1990403**

Color - Black

Compatability - ● **Continental GT**



Increased seat comfort for both rider and passenger from the addition of 3D netting. Rider stand over height is maintained. Royal Enfield branded.



---

## CAPOT DE SELLE DOUBLE

€138,-

**Article: 1990434**

Color - Black

Compatability - ● Continental GT



Coordinated Color Hood for the two seat saddle.

---

## DOUBLE SEAT COWL

€138,-

**Article: 1990435**

Color - Blue

Compatability - ● Continental GT



Coordinated Color Hood for the two seat saddle.

---

## DOUBLE SEAT COWL

€138,-

**Article: 1990433**

Color - Blanc

Compatability - ● Continental GT



Coordinated Color Hood for the two seat saddle.

---

## MACHINED BAR END FINISHER KIT

€57,-

**Article: 1990457**

Color - Silver

Compatability - ● **Interceptor**, ● **Continental GT**



Subtly style your motorcycle with these handlebar finishers. They are machined from billet aluminium and anodized for a long life.

---

## RSU FINISHER KIT

€57,-

**Article: 1990445**

Color - Black

Compatability - ● **Interceptor**, ● **Continental GT**



Style your motorcycle subtly with this RSU Finisher Kit, anodized for durability.

---

## HEEL GUARD, PAIR

€57,-

**Article: 1990443**

Color - Black

Compatability - ● **Continental GT**



Replace the brushed original heel guards with this powder-coated pair and give your motorcycle a stylish, stealth look.



---

## HEEL GUARD, RH

€57,-

**Article: 1990444**

Color - Black

Compatability - ● **Interceptor**



Replace the brushed original heel guard with this powder-coated version and give your motorcycle a stylish, stealth look.

---

## INTAKE COVER KIT

€57,-

**Article: 1990442**

Color - Black

Compatability - ● **Interceptor**, ● **Continental GT**



Give your motorcycle a stealth look with these EFI covers that replace the brushed originals.

---

## HANDLEBAR BRACE PAD

€41,-

**Article: 1990402**

Color - Black

Compatability - ● **Interceptor**



Add a touch of style with this handlebar brace pad. Padded with foam and a branded cover.

---

## LUGGAGE RACK, CHROME

€127,-

**Article - PPAQ650RE**

Color - Stainless steel

Compatability -  **Interceptor**,  **Continental GT**



This parquet floor is versatile and very useful.

---

## LUGGAGE RACK, BLACK

€127,-

Article - PPAQ650REBK

Color - Black

Compatability -  **Interceptor**,  **Continental GT**



---

## MACHINED OIL FILLER CAP

€ 41

**Article: 1990218**

Color - Black

Compatability -  **Interceptor**,  **Continental GT**



This oil filler cap is machined from billet aluminium and has a separate branded infill to be fitted last, thus keeping the Royal Enfield logo always positioned as intended.



---

## MACHINED OIL FILLER CAP

€ 41

**Article: 1990236**

Color - Silver

Compatability - ● **Interceptor**, ● **Continental GT**



This oil filler cap is machined from billet aluminium and has a separate branded infill to be fitted last, thus keeping the Royal Enfield logo always positioned as intended.

---

## MACHINED FRONT RESERVOIR CAP

€34,-

**Article: 1990650**

Color - Black

Compatability - ● **Interceptor**, ● **Continental GT**



Machined front master cylinder cap. Black anodized finish.  
Royal Enfield branded.

---

## MACHINED FRONT RESERVOIR CAP

€34,-

**Article: 1990651**

Color - Silver

Compatability - ● **Interceptor**, ● **Continental GT**



Machined front master cylinder cap. Silver anodized finish.  
Royal Enfield branded.

---

## MACHINED FRONT RESERVOIR CAP

€41,-

**Article: 1990652**

Color - Black

Compatability - ● **Interceptor**, ● **Continental GT**

Add a touch of style to your ride. Machined from billet aluminium, the front master cylinder cap comes with an anodized finish for durability and styling. Check screw mounting positions against bike for compatibility. Also available in Silver.



---

## MACHINED FRONT RESERVOIR CAP

€41,-

**Article: 1990653**

Color - Silver

Compatability - ● **Interceptor**, ● **Continental GT**

Add a touch of style to your ride. Machined from billet aluminium, the front master cylinder cap comes with an anodized finish for durability and styling. Check screw mounting positions against bike for compatibility. Also available in Black.



---

## WATER RESISTANT BIKE COVER

€53,-

**Article: 1990642**

Color - Black

Compatability - ● **Interceptor**, ● **Continental GT**

Protect your motorcycle when not in use with this water resistant cover. It also has Royal Enfield branding and folds neatly into a zipped pocket for storage.



---

## WATER RESISTANT BIKE COVER

€53,-

**Article: 1990643**

Color - Blue

Compatability - ● **Interceptor**, ● **Continental GT**



Protect your motorcycle when not in use with this water resistant cover. It also has Royal Enfield branding and folds neatly into a zipped pocket for storage.

---

## PANNIER SET, SOFT, PAIR,

€289,-

**Article: 1990410**

Color - Black

Compatability - ● **Interceptor**, ● **Continental GT**



A pair of quality soft bags designed specifically for the 650 twins. You will need to fit these with the chrome pannier frames, 1990411- listed below in related items.

A genuine Royal Enfield accessory

---

## REAR PANNIER FRAMES (PAIR)

€80,-

**Article: 1990411**

Color - Chrome

Compatability - ● **Interceptor**, ● **Continental GT**



REAR PANNIER FRAMES (PAIR), To support soft luggage. Pannier frame rail set for the 650 Twins, polished stainless finish. These can be used with the matching RE soft luggage or just an economical way to offer support to a universal type throw overs. These are a genuine Royal Enfield accessory produced in India and offer very good value for money for a reasonable quality product.



ROYAL ENFIELD

**METEOR**  
**350**





---

## AIR FLY EVO ENGINE GUARD

€130

**Article: KXA00003**

Color - Black

The Air Fly evolved.  
With the horizontal tubes removed for a lighter more  
simplified design that suits the modern day cruiser.



---

## AIR FLY EVO ENGINE GUARD

€130

**Article: KXA00004**

Color - Silver

The Air Fly evolved.  
With the horizontal tubes removed for a lighter more  
simplified design that suits the modern day cruiser.



---

## TRAPEZIUM ENGINE GUARD

€115,-

**Article: KXA00007**

Color - Black

Cover those endless long rides with the unique angular  
styling and a layer of protection of the Trapezium engine  
guard. Made from a 32mm steel tube, it comes with a dual  
powder coating for corrosion resistance. It is precisely  
engineered to fit, with a contemporary Royal  
Enfield branding.



---

## TRAPEZIUM ENGINE GUARD

€115,

**Article: KXA00008**

Color - Silver

Cover those endless long rides with the unique angular styling and a layer of protection of the Trapezium engine guard. Made from a 32mm stainless steel tube, it will resist corrosion even if scratched. It is precisely engineered to fit, with a contemporary Royal Enfield branding.



---

## OCTAGON ENGINE GUARD

€115,-

**Article: KXA00005**

Color - Black

Give your cruiser a layer of protection and style with the smooth lines of the Octagon engine guard. Made from a 32mm steel tube, it comes with a dual powder coating for corrosion resistance. It is precisely engineered to fit and comes with a contemporary Royal Enfield branding.



---

## OCTAGON ENGINE GUARD

€115,-

**Article: KXA00006**

Color - Silver

Give your cruiser a layer of protection and style with the smooth lines of the Octagon engine guard. Made from a 32mm stainless steel tube, it will resist corrosion even if scratched. It is precisely engineered to fit and comes with a contemporary Royal Enfield branding.





---

## ALUMINIUM SUMP GUARD

€115,-

**Article: KXA00040**

Color - Aluminium

Riding on rough terrain? Add a layer of protection to the engine and lower frame rails with the sump guard. The Sump Guard consists of a pressed heavy-duty alloy plate which is then brushed. A Royal Enfield branding is centered. Two mounting screws and two mild steel plates enable fitment to the motorcycle. It provides essential protection to the engine and frame tubes from debris off the front tire or through bottoming out whilst dropping off edges.



---

## DELUXE FOOT PEG KIT

€80,-

**Article: KXA00030**

Color - Silver

Add more to your comfort on long rides with forged aluminium foot pegs which come with a larger footprint. The rubber inserts isolate vibrations with their specific bayonet style mounting design and this fits both rider and pillion positions.



---

## DELUXE FOOT PEG KIT

€80,-

**Article: KXA00031**

Color - Black

Add more to your comfort on long rides with forged aluminium foot pegs which come with a larger footprint. The rubber inserts isolate vibrations with their specific bayonet style mounting design and this fits both rider and pillion positions.



---

## BAR END MIRROR, HOMOLOGATED

€208,-

**Article: 1990401**

Color - Black

These Royal Enfield marked fully homologated replacement mirrors will be a sight to behold on your modern easy cruiser. The Billet Machined Mirrors offer improved stability and visibility.

\*Bar End Mirror Adaptor, part no. KXA00125 is available separately.



---

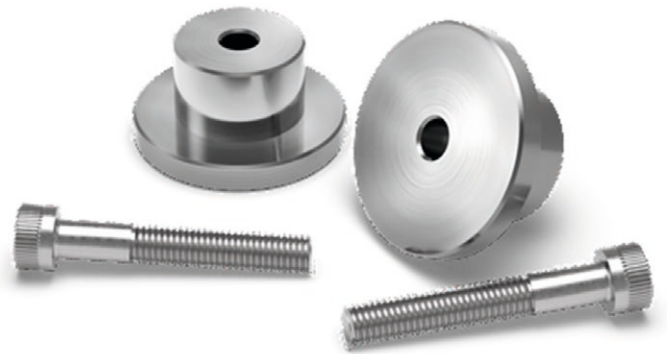
## BAR END MIRROR, ADAPTOR

€22,-

**Article: KXA00125**

Color - Aluminium

Designed bespoke for the Bar End Mirrors, these Machined Adapters will simply replace the OEM barend finishers to provide the required mounting surface for the Bar End Mirrors to clamp to.



---

## TOURING RIDER SEAT, BLACK

€115,-

**Article: KXA00073**

Color - Black

The all-new breed of Touring Seats for Meteor with a bespoke seat cushion, extra lumbar support and flatter larger base surface, provides maximum support on long rides. The use of 3D net technology evenly distributes the weight while adding to the comfort. The additional stitching and an embroidered logo add to the premium nature of this seat, giving you a true highway cruiser experience. Also, available in Brown color.



---

## TOURING PASSENGER SEAT, BLACK

€80,-

**Article: KXA00067**

Color - Black

With a higher front surface to support the lumbar portion and the same 3D Net technology as the Touring Rider seat, the Touring Passenger seat provides enhanced comfort on those long rides. Also, available in Brown color.



---

## TOURING RIDER SEAT, BROWN

€115,-

**Article: KXA00074**

Color - Brown

The all-new breed of Touring Seats for Meteor with a bespoke seat cushion, extra lumbar support and flatter larger base surface, provides maximum support on long rides. The use of 3D net technology evenly distributes the weight while adding to the comfort. The additional stitching and an embroidered logo add to the premium nature of this seat, giving you a true highway cruiser experience. Also, available in Black color.



---

## TOURING PASSENGER SEAT, BROWN

€80,-

**Article: KXA00068**

Color - Brown

With a higher front surface to support the lumbar portion and the same 3D Net technology as the Touring Rider seat, the Touring Passenger seat provides enhanced comfort on those long rides. Also, available in Black color.





---

## LOW RIDE SEAT, BLACK

€115,-

**Article: KXA00065**

Color - Black

The Low Ride seat offers a 20 mm reduction in height and utilizes 3D net technology to evenly distribute weight for increased comfort over long distances. It comes with a Royal Enfield tag on the rear and is styled the same as the OE seat. Also available in brown.



---

## LOW RIDE SEAT, BROWN

€115,-

**Article: KXA00066**

Color - Brown

The Low Ride seat offers a 20 mm reduction in height and utilizes 3D net technology to evenly distribute weight for increased comfort over long distances. It comes with a Royal Enfield tag on the rear and is styled the same as the OE seat.



---

## PASSENGER BACKREST KIT

€69,-

**Article: KXA00086**

Color - Black

Styled for the Meteor, the passenger backrest comes with cast aluminium backrest arms, which provide the mounting structure for either the black or brown backrest pad dependent on your preference. The kit also contains a backplate with an embossed logo which has been post machined to generate a subtle contrast.

\*Passenger backrest Pad Black/Brown is available separately.



---

## PASSENGER BACKREST PAD, BLACK

€34,-

**Article: KXA00088**

Color - Black

The black backrest pad has been designed to support the lumbar of the pillion. Constructed in the same manner as the seats themselves its the perfect

\*Requires KXA00086



---

## PASSENGER BACKREST PAD, BROWN

€34,-

**Article: KXA00102**

Color - Brown

The black backrest pad has been designed to support the lumbar of the pillion. Constructed in the same manner as the seats themselves its the perfect.

\*Requires KXA00086



---

## PLEATED SEAT COVER

€34,-

**Article: KXA00134**

Color - Black

Protect your seats from elements for a longer life with these Royal Enfield branded Rider & Passenger seat covers.



---

## PLEATED SEAT COVER

€34,-

**Article: KXA00135**

Color - Brown

Protect your seats from elements for a longer life with these Royal Enfield branded Rider & Passenger seat covers.



---

## TINTED FLYSCREEN

€104,-

**Article: KXA00063**

Speed through the wind with the injection-molded tinted flyscreen which adds a level of wind protection when you ride. This kit is very easy to install, using two separating clamps and the stainless steel bars provided.



---

## TOURING SCREEN

€150,-

**Article: KXA00145**

Get more wind protection with this touring screen, It will reduce fatigue while giving you a clear view of the road ahead on your Meteor 350. This hard-coated, injection-molded screen is scratch resistant and comes with a subtle Royal Enfield branding. It has a pressure reduction vent to help prevent low pressure areas behind the screen which contributes to buffeting. Also, the mounting kit consists of two split clamps along with stainless steel rods and fixings to ensure that the Touring Screen is positioned perfectly.





---

## SIDE BOX, RH

€104,-

**Article: KXA00076**

Color - Black

Ride many miles, safe and secure, with this fully injection molded box which has styling cues of classic ammunition crates. It comes with 12.5ltr capacity along with a lockable lid. Add a waterproof inner bag, KXF00034/B (available separately), designed to fit this Side Box, to protect any valuables from elements.

\*Requires Mounting Kit KXF00010/



---

## PANNIER MOUNT, RH

€57,-

**Article: KXA00042**

Color - Black

Designed for a perfect fit for Side Box, this mounting kit consists of a rail and stainlesssteel fixings to secure it to the motorcycle. It also features investment castings for robustness and peace of mind.



---

## WATERPROOF INNER BAG

34,-

**Article: KXA00082**

Color - Black

Designed to fit the Meteor 350 Side Box, this waterproof roll-top bag will ensure your items are kept safe from the elements. It has a single strap that doubles as a carry handle and has a subtle Royal Enfield branding on both sides.





# HIMALAYAN





---

## ALUMINIUM PANNIER, PAIR, 26L

€637,-

**Article: 1990200**

Color - Silver



These rugged aluminium panniers set off the purposeful styling and 'go anywhere' nature of the Himalayan. They boast thick walled aluminium construction and ABS corner protection with a capacity of 26 Litres and top mounts for strapping down additional loads. A lockable lid ensures safety and peace of mind. Pannier Mounting Kit available separately.

---

## ALUMINIUM PANNIER, PAIR, 26L

€637,-

**Article: 1990230**

Color - Black



These rugged aluminium panniers set off the purposeful styling and 'go anywhere' nature of the Himalayan. They boast thick walled aluminium construction and ABS corner protection with a capacity of 26 Litres and top mounts for strapping down additional loads. A lockable lid ensures safety and peace of mind. Pannier Mounting Kit available separately.

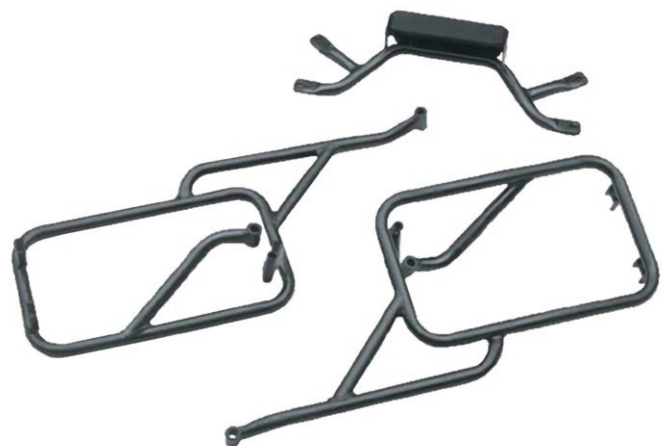
---

## PANNIER MOUNTING KIT

€115,-

**Article: 1990201**

Color - Black



Manufactured from 18mm steel tubing. Black powder coated to give a durable, corrosion resistant finish. Has a provision to relocate rear numberplate and indicator lights ensuring that homologation is maintained. Panniers are available separately. Aluminium Panniers, 26 litre - Silver: 1990200, Black : 1990201



## COMPACT ENGINE GUARD

€115,-

**Article: 1990204**

Color - Black

Add a layer of protection to key engine areas without compromising on style or ground clearance. The compact engine guard is made from 25mm mild steel tube with dual coating for corrosion resistance. It has a discrete Royal Enfield branding on the upright.



Accessory under development.  
Non contractual photo.

## LARGE ENGINE GUARD

€115,-

**Article: 1990205**

Color - Black

Engine protection guards fabricated from 22mm steel tube. Guards are black powder coated for corrosion resistance and durability. Fitment enhances bike appearance while adding a layer of protection



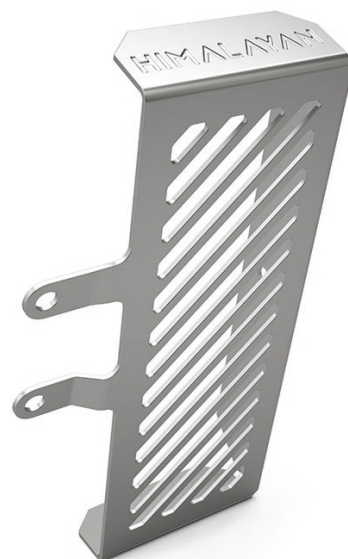
## ALUMINUM RADIATOR GRILLE

€53,-

**Article: 1990216**

Color - Alluminium

Perfectly protects the radiator from flying stones and insect impacts, or anything else that could hit your radiator.



---

## TOURING SEAT, RIDER

€92,-

**Article: 1990208**

Color - Black



Rugged and comfortable, the accessory touring seat benefits from 3D net technology to evenly distribute weight for increased comfort over long distances. With a hard wearing non-slip cover and Royal Enfield branding, rugged has never looked so good.

---

## TOURING SEAT, PASSENGER

€69,-

**Article: 1990209**

Color - Black



Rugged and comfortable, the accessory touring seat benefits from 3D net technology to evenly distribute weight for increased comfort over long distances. With a hard wearing non-slip cover and Royal Enfield branding.

---

## HEEL GUARD, RH

€53,-

**Article: 1990219**

Color - Silver



Replace the brushed original heel guard and give your motorcycle a stealth look.

---

## BRACED HANDLEBAR KIT

€127,-

**Article: 1990206**

Color - Black



Give your Himalayan a distinct Enduro look with ergonomically designed aluminium handlebars. The thick-walled bars have an additional brace for added strength and reduce weight by approximately 20%. Note: Original bar end weights do not fit. Accessory bar end weights available separately.

---

## HANDLEBAR BRACE PAD

€41,-

**Article: 1990228**

Color - Black



Get the authentic adventure look with this handlebar brace pad. It is designed to fit over the brace of the accessory aluminium handlebars and comes embossed with the Royal Enfield logo.

*Note: Mounting on aluminum handlebars (Ref GUID100HIMBL) only.*

---

## MACHINED BAR END FINISHER KIT

€53,-

**Article: 1990220**

Color - Black



Machined bar ends weights. Royal Enfield Branded. Designed specifically for the Accessory Aluminium Handlebars, these machined finishers are anodized black with lazer etched branding detail.

*Note: Mounting on aluminum handlebars (Ref GUID100HIMBL) only.*



---

## HAND GUARD KIT

€115,-

**Article: 1990211**

Color - Black



Robust injection molded handguard kit. Provides additional protection from environment and helps to protect levers in the event of a fall.

---

## MACHINED OIL FILLER CAP

€82,-

**Article: 1990218**

Color - Black



This oil filler cap is machined from billet aluminium and has a separate branded infill to be fitted last, thus keeping the Royal Enfield logo always positioned as intended.

---

## MACHINED OIL FILLER CAP

€82,-

**Article: 1990236**

Color - Silver



This oil filler cap is machined from billet aluminium and has a separate branded infill to be fitted last, thus keeping the Royal Enfield logo always positioned as intended.

---

## MACHINED FRONT RESERVOIR CAP

€34,-

**Article: 1990650**

Color - Black



Machined front master cylinder cap. Black anodized finish.  
Royal Enfield branded.

---

## MACHINED FRONT RESERVOIR CAP

€34,-

**Article: 1990651**

Color - Silver



Machined front master cylinder cap. Silver anodized finish.  
Royal Enfield branded.

---

## MACHINED FRONT RESERVOIR CAP

€41,-

**Article: 1990652**

Color - Black



Add a touch of style to your ride. Machined from billet aluminium, the front master cylinder cap comes with an anodized finish for durability and styling. Check screw mounting positions against bike for compatibility. Also available in Silver.

---

## MACHINED FRONT RESERVOIR CAP

€41,-

**Article: 1990653**

Color - Silver



Add a touch of style to your ride. Machined from billet aluminium, the front master cylinder cap comes with an anodized finish for durability and styling. Check screw mounting positions against bike for compatibility. Also available in Black.

---

## WATER RESISTANT BIKE COVER

€53,-

**Article: 1990642**

Color - Black



Protect your motorcycle when not in use with this water resistant cover. It also has Royal Enfield branding and folds neatly into a zipped pocket for storage.

---

## WATER RESISTANT BIKE COVER

€53,-

**Article: 1990643**

Color - Blue



Protect your motorcycle when not in use with this water resistant cover. It also has Royal Enfield branding and folds neatly into a zipped pocket for storage.





---

## ALUMINIUM SUMP GUARD, LARGE

€115,-

**Article: 1990677**

Color - Silver

Compatibility - ● Classic 500, ● Bullet 500,

● Bullet Trials 500



Brushed Aluminium Sumpguard, adds a discrete layer of protection from stones and debris. Does not fit with Airy, Trapezium or Octagon engine guards.

---

## TRAPEZIUM ENGINE GUARD

€115,-

**Article: 1990602**

Color - Black

Compatibility - ● Classic 500, ● Bullet 500



The Trapezium engine guard with its angular styling gives your motorcycle a unique look while adding a layer of protection. Made from 32mm mild steel tube, it comes with a dual-coating for corrosion resistance. It is precisely engineered to fit and has Royal Enfield branding on the upright tubes. Also available in polished stainless steel.

---

## PARE-CARTER TRAPEZIUM

€115,-

**Article: 1990635**

Color - Stainless steel

Compatibility - ● Classic 500, ● Bullet 500



The Trapezium engine guard comes with an angular styling giving your motorcycle a unique look while adding a layer of protection. Made from 32mm stainless steel tube, this guard will resist corrosion even if scratched. It is precisely engineered to fit and comes with Royal Enfield branding on the upright tubes. Also available in powder-coated black.

---

## PARE-CARTER OCTAGON

€127,-

**Article: 1990634**

Color - Stainless steel

Compatability - ● Classic 500, ● Bullet 500

The Trapezium engine guard comes with an angular styling giving your motorcycle a unique look while adding a layer of protection. Made from 32mm stainless steel tube, this guard will resist corrosion even if scratched. It is precisely engineered to fit and comes with Royal Enfield branding on the upright tubes. Also available in powder-coated black.



---

## PARE-CARTER OCTAGON

€127,-

**Article: 1990601**

Color - Black

Compatability - ● Classic 500, ● Bullet 500

The Trapezium engine guard comes with an angular styling giving your motorcycle a unique look while adding a layer of protection. Made from 32mm stainless steel tube, this guard will resist corrosion even if scratched. It is precisely engineered to fit and comes with Royal Enfield branding on the upright tubes. Also available in powder-coated black.



---

## COMPACT ENGINE GUARD, STAINLESS STEEL

€115,-

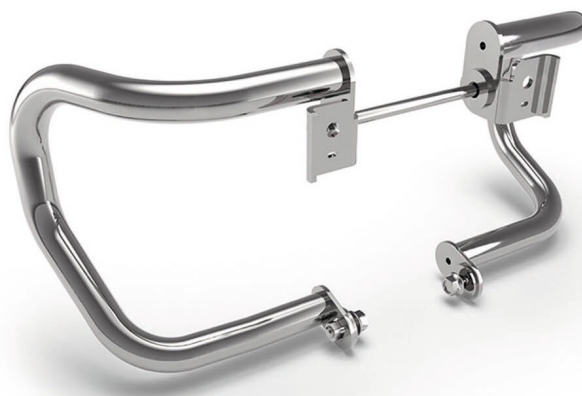
**Article: 1990687**

Color - Silver

Compatability -

● Bullet Trials 500

Add a layer of protection to the motorcycle engine, without compromising on style or ground clearance. The compact engine guard has the strength of 22mm stainless steel tube and is corrosion resistant.





---

## TOURING SEAT, RIDER

€92,-

**Article: 1990605**

Color - Black

Compatability - ● Classic 500



The stylish and comfortable touring seat benefits from the use of 3D net technology to evenly distribute weight for increased comfort over long distances. Subtle Royal Enfield branding lends it a touch of style.

---

## TOURING SEAT, PASSENGER

€80,-

**Article: 1990607**

Color - Black

Compatability - ● Classic 500



The stylish and comfortable touring seat benefits from the use of 3D net technology to evenly distribute weight for increased comfort over long distances. Subtle Royal Enfield branding lends it a touch of style.

---

## MACHINED OIL FILLER CAP

€41,-

**Article: 1990613**

Color - Silver

Compatability - ● Classic 500, ● Bullet 500  
● Bullet Trials 500



Don't you love the details? This oil filler cap is machined from billet aluminium and has a separate branded infill to be fitted last, thus keeping the Royal Enfield logo always positioned as intended.

---

## MACHINED OIL FILLER CAP

€41,-

**Article: 1990645**

Color - Black

Compatability - ● Classic 500, ● Bullet 500,

● Bullet Trials 500



Don't you love the details? This oil filler cap is machined from billet aluminium and has a separate branded infill to be fitted last, thus keeping the Royal Enfield logo always positioned as intended.

---

## LUGGAGE RACK, REAR

€138,-

**Article: 1990631**

Color - Black

Compatability - ● Classic 500



Manufactured from 16mm diameter mild steel tubing. Black powder coated to give a durable, corrosion resistant finish. Royal Enfield branded.

---

## LUGGAGE RACK, REAR

€150,-

**Article: PPAQ500RE2**

Color - Stainless steel

Compatability - ● Classic 500



Manufactured from 16mm diameter stainless steel tubing to give a durable, corrosion resistant finish. Royal Enfield branded.

---

## PANNIER MOUNTING KIT, DISC

€80,-

**Article: 1990670**

Color - Black

Compatability - ● Classic 500



Manufactured from 16mm diameter mild steel tubing. Black powder coated to give a durable, corrosion resistant finish.

Panniers are available separately.

Pannier, Military Pair in wax canvas -

Olive Green: 1990618, Black: 1990619

---

## MILITARY PANNIER, PAIR

€231,-

**Article: 1990618**

Color - Olive Green

Compatability - ● Classic 500



Heavy-duty water resistant Military Canvas bags. Quick release straps for swift removal. Royal Enfield branded.

Mounting rails are available separately.

Pannier Mounts - Pair, Fabricated - Disc: 1990670

---

## MILITARY PANNIER, PAIR

€231,-

**Article: 1990619**

Color - Black

Compatability - ● Classic 500



Heavy-duty water resistant Military Canvas bags. Quick release straps for swift removal. Royal Enfield branded.

Mounting rails are available separately.

Pannier Mounts - Pair, Fabricated - Disc: 1990670



---

## RIGHT SADDLEBAG SUPPORT

€57,-

**Article: 1990671**

Color - Black

Compatability - ● Classic 500



Made from 16mm diameter mild steel tubing. Black lacquer finish for durability and corrosion resistance.

---

## CLASSIC RIGHT MILITARY BAG

€104,-

**Article: 1990655**

Color - Kaki

Compatability - ● Classic 500



Ready for a walk or a weekend outing? The single military satchel sits comfortably on its dedicated mounting rail, available separately. The waxed canvas saddlebag is water resistant, yet easy to set up and take down with the quick release straps

---

## CLASSIC RIGHT MILITARY BAG

€104,-

**Article: 1990654**

Color - Black

Compatability - ● Classic 500



Ready for a walk or a weekend outing? The single military satchel sits comfortably on its dedicated mounting rail, available separately. The waxed canvas saddlebag is water resistant, yet easy to set up and take down with the quick release straps

---

## LUGGAGE RACK, REAR

€150,-

Article: PPAQ500RE2BL - Classic 500  
Article: PPAQ500REBLT - Bullet Trials 500

Color - Black ●

Compatability -



Manufactured from 16mm diameter stainless steel tubing to give a durable, corrosion resistant finish. Royal Enfield branded.

---

## HEADLIGHT GRILL

€53,-

Article: 1990664

Color - Black

Compatability - ● Classic 500, ● Bullet 500,

● Bullet Trials 500



Robust injection molded headlight grill to customise the headlight and provide additional protection from debris.

\*Not Homologated\*

---

## NUMBER BOARD, LH

€80,-

Article: 1990674

Color - Black

Compatability - ● Classic 500, ● Bullet 500,

● Bullet Trials 500



In 1948, riding a Bullet 350, Royal Enfield won the International Six Day Trial, a famed motorcycle endurance tournament. Bring that legacy to your motorcycle with the number board that proudly displays the number 48. This black injection moulded board fits to the left hand side of the motorcycle.

---

## MACHINED FRONT RESERVOIR CAP

€34,-

**Article: 1990650**

Color - Black

Compatability - ● Classic 500, ● Bullet 500,

● Bullet Trials 500



Machined front master cylinder cap. Black anodized finish.  
Royal Enfield branded.

---

## MACHINED FRONT RESERVOIR CAP

€34,-

**Article: 1990651**

Color - Silver

Compatability - ● Classic 500, ● Bullet 500,

● Bullet Trials 500



Machined front master cylinder cap. Silver anodized finish.  
Royal Enfield branded.

---

## MACHINED FRONT RESERVOIR CAP

€41,-

**Article: 1990652**

Color - Black

Compatability - ● Classic 500, ● Bullet 500,

● Bullet Trials 500



Add a touch of style to your ride. Machined from billet aluminium, the front master cylinder cap comes with an anodized finish for durability and styling. Check screw mounting positions against bike for compatibility. Also available in Silver.



---

## MACHINED FRONT RESERVOIR CAP

€41,-

**Article: 1990653**

Color - Silver

Compatibility - ● Classic 500, ● Bullet 500,

● Bullet Trials 500

Add a touch of style to your ride. Machined from billet aluminium, the front master cylinder cap comes with an anodized finish for durability and styling. Check screw mounting positions against bike for compatibility. Also available in Black.



---

## WATER RESISTANT BIKE COVER

€53,-

**Article: 1990642**

Color - Black

Compatibility - ● Classic 500, ● Bullet 500,

● Bullet Trials 500

Protect your motorcycle when not in use with this water resistant cover. It also has Royal Enfield branding and folds neatly into a zipped pocket for storage.



---

## WATER RESISTANT BIKE COVER

€53,-

**Article: 1990643**

Color - Blue

Compatibility - ● Classic 500, ● Bullet 500,

● Bullet Trials 500

Protect your motorcycle when not in use with this water resistant cover. It also has Royal Enfield branding and folds neatly into a zipped pocket for storage.



# ROYAL ENFIELD

ROYALENFIELD-BENELUX.COM



Votre revendeurYour dealer

Les données, descriptions et illustrations sont non contractuelles et les produits peuvent également présenter des caractéristiques différentes pour des raisons structurelles. Royal Enfield se réserve le droit d'apporter des modifications sans préavis sur ses propres produits.

The data, descriptions and illustrations are non-contractual and the products may also have different characteristics for structural reasons. Royal Enfield reserves the right to make changes without notice on its own products.

 <https://www.facebook.com/royalenfieldmotors/>

 <https://www.instagram.com/royalenfieldmotorsbenelux/>

 <https://www.youtube.com/royalenfieldmedia>



**MotoMondo**